

903/1 Point Park Crescent Docklands VIC

2  2  2 

Occupying in a prime position at Yarra Point within the prestigious Yarra Edge precinct, it's perfectly poised for enjoying everything that the exhilarating Docklands precinct has to offer.

Encompassing a spacious area of 112 m2 and a balcony area of 7m2, this residence captures spectacular north-facing never-to-be-obstructed magnificent views of the marina and city lights through the massive floor-to-ceiling double-glazed windows.

Enjoy cooking and entertaining in this stunning, modern updated kitchen with so many wonderful features, complete with plenty of cupboard space all soft touch closing, beautiful stone benchtops, easy-to-use induction cook top, new top of the range Bosch dishwasher, integrated fridge with icemaker for your convenience. All lights and light switches have been fully upgraded, stunning new light fittings all to stay for your enjoyment.

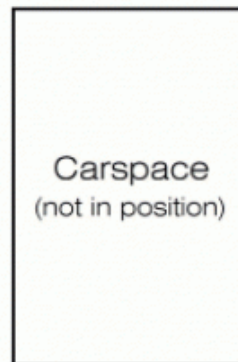
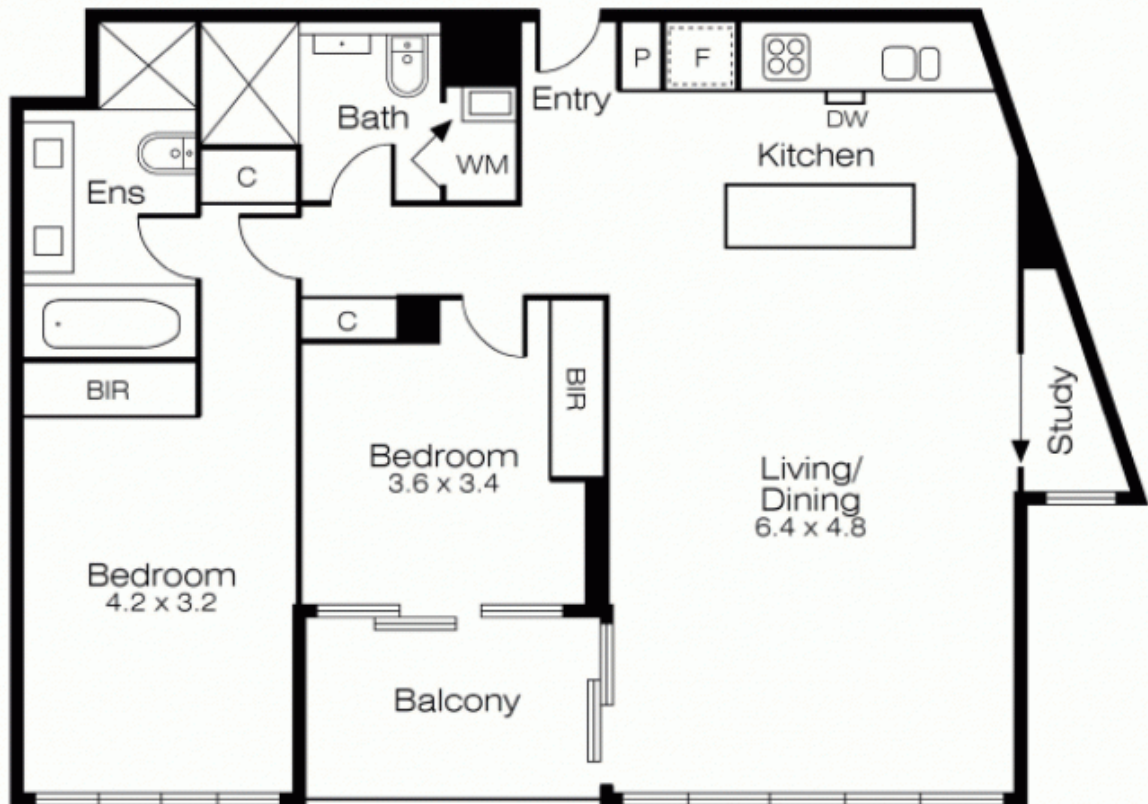
Price : \$ 1,030,000
Building Size : 119 sqm
Land Size : 119 sqm
View : <https://www.cityresidentialbourkestreet.com.au/sale/vic/inner-city/docklands/residential/apartment/6770297>



Glenn Donnelly
03 9001 1333



Lina D' Ambrosio
0430 929 851



0m 2m



Not to Scale

Every care has been taken to verify the accuracy of details in this brochure. Prospective purchasers are requested to take such action as is necessary to satisfy themselves of any pertinent matters